

Illustration 1: film grain versus digital sensor

Film Lab Proposal.

Our proposal is for a film/celluloid based Lab to be set up and ran in the Gilberts Chocolate Factory space alongside the letterpress.

The Lab will offer the chance for anyone interested in working with motion picture film to come and learn how to shoot, develop, process, print and project.

Photographic based processes in moving image are entirely different from those produced by electronic or digital means and offer a very different range of Artistic possibilities.

The Cinema industry is currently undergoing a seachange and previously inaccessible machines are now going for scrap and skills and knowledge are finding a new place amongst artisans.

There is a very strong Lab Network across europe¹ which we plan to join as soon as basic facilities and tools are in place.

These Labs work as member organisations. People pay a yearly subscription and can use machines after they have been trained/shown how to safely operate them.

We are aiming for this model but quite a lot of preparation is needed.

¹ European Lab Network <http://filmlabs.com/>

Labs also run various workshops and courses² which explore uses of their facilities. These are open to anyone whether they be film makers, artists, activists, media producers, etc.

This Lab will be an Artists Run Lab. As such the two founding Artists Graeme Hogg and James Balmer have areas of interest that will be a secondary focus for the space but will overlap with machine use, restorations and creative tools and projects.

We aim to provide a range of processes in the three main formats of 8, 16 and 35mm. To achieve this many stages of re-building, customisation, fabrication and design/engineering are necessary and these form one aspect of both our interests.

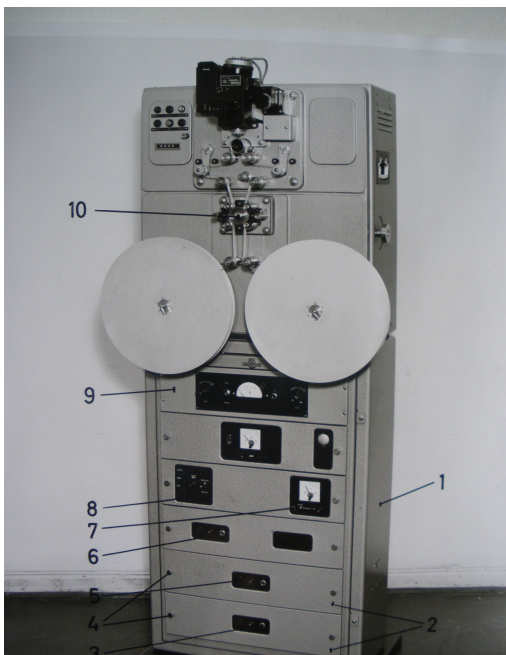


Illustration 2: optical sound machine

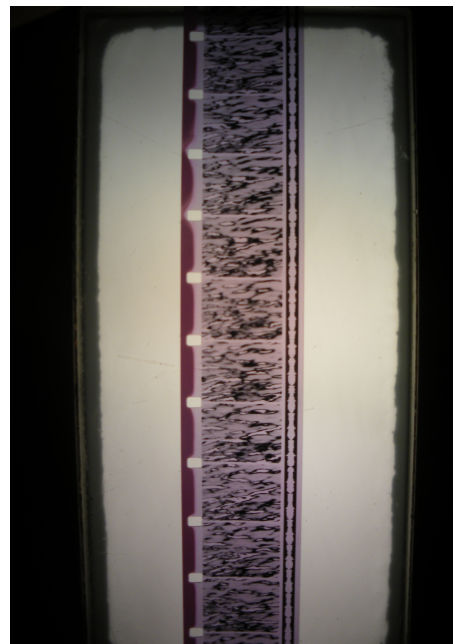


Illustration 3: strip of 16mm film with soundtrack

We also plan to run our own projects and make our own work.

Projects might typically involve working with film and moving image resources around the city or situations and environments where film projections are needed, ranging from our involvement as technicians and equipment providers to residencies and creative partnerships.

² No.W.Here in London <http://www.no-w-here.org.uk/index.php?cat=3&subcat=main&ord=past>

A video/digital aspect of Lab facilities is also planned. This will be a natural and complimentary aspect to the Labs primary focus on film. Several popular workshop topics would be possible here from things like Arduino and Raspberry PI (user programmable micro-chips) to using analogue and digital video mediums creatively and artistically.



Illustration 4: 16mm rig for artists performance

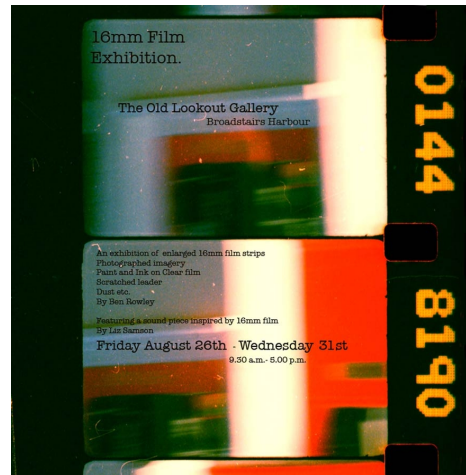


Illustration 5: flyer for exhibition

Another area we'd like to mention is public events and screenings. A strong screening programme has been central to the success of most Labs. We'd really like to explore the possibilities of using the gallery space for this. Screenings help generate a different kind of culture around artists moving image. Many important historic works of Art are only available on film formats and must be seen in these modes of presentation to fully understand and appreciate them.

Graeme Hogg also works with audio and sound. Part of the Lab will involve tape machines, audio projects using analogue tools and several archive based audio projects that he is currently involved with. James Balmer has been involved in the design and building of PA sound systems and related tools and is planning on developing some of these projects in a Lab setting.



Illustration 6: clock work 16mm camera

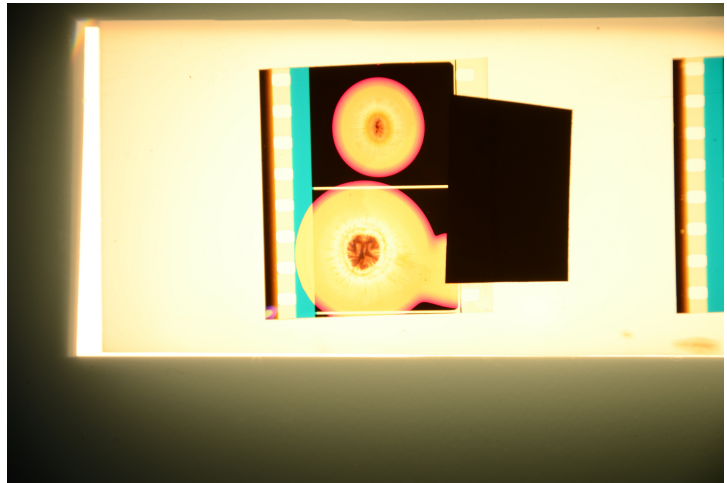


Illustration 7: g.hoggs recent work

A final element of a decent Lab for the Bristol and south west area is the opportunity for international visitors, residencies and an exchange programme. As well as established and emerging local and national artists who may want to make use of this facility there is an ever growing number of international touring film workers and artists who would want to come to Bristol and be involved in developing the space.

To summarise. A film Lab consists essentially of tools, skills and knowledge. These things are visualised as a platform for artists, film makers, students to engage with and develop. The connective power of film will also be explored as a way to engage with communities, special interest groups, amateur societies, collections, etc. We are arguing that celluloid is an endangered industrial process and on this level we are exploring assistance from Heritage Lottery in the setting up and establishing of a Lab dedicated to its preservation and continued creative exploration.



Illustration 8: super 8 cameras



Illustration 9: oxberry control panel

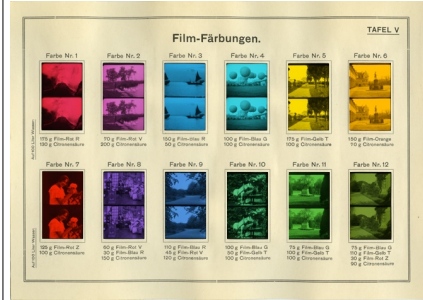


Illustration 10: colour chart

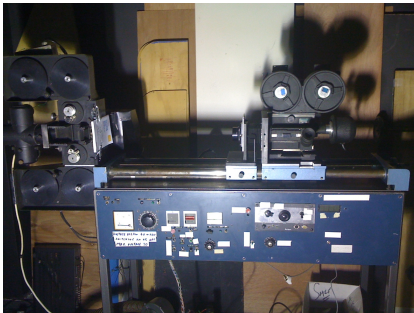


Illustration 11: oxberry optical printer



Illustration 12: typical lab setup



Illustration 13: reels of developed 16mm

Contact: Graeme Hogg (hogg)
graemehogg@bristol-channel.org 07968360216

Some links:

- <http://laborberlin.wordpress.com/>
- <http://cherrykino.blogspot.co.uk/>
- <http://www.no-w-here.org.uk/>
- <http://www.kino-climates.org/>
- <http://mononoawarefilm.com/>
- <http://www.lightindustry.org/>
- <http://www.visionaryfilm.net/>

